



John B. Sanford Real Estate

6.822 Acres—FM 967 and Arveda Ln

645 FM 967 #200, Buda, TX 78610

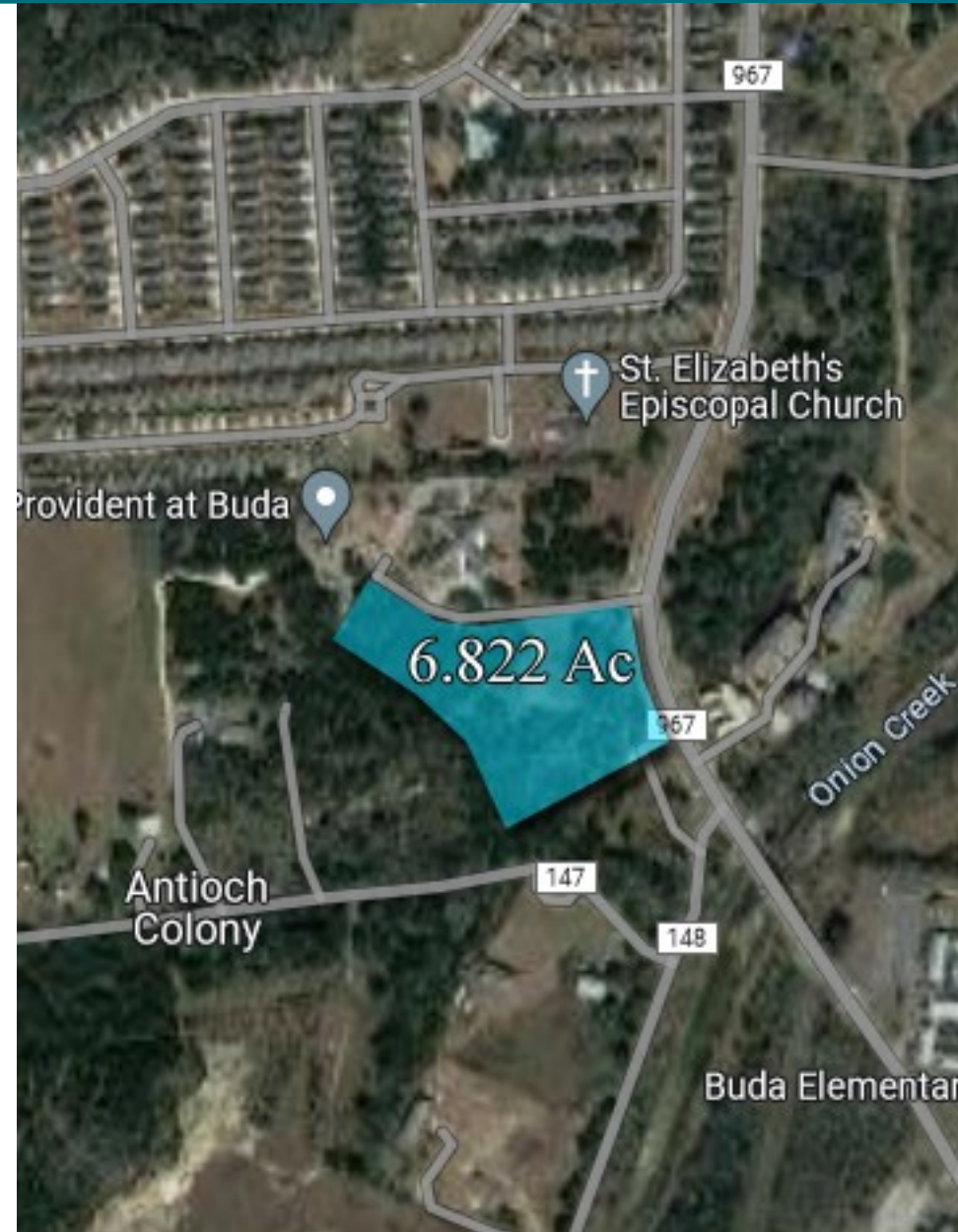
Price: Contact Broker

Size: 6.822 Acres

Utilities: Water: City of Buda on Site  
Sewer: City of Buda on Site  
Electricity: PEC on Site

Zoning: F4H—Mixed Use

Notes: Prime Retail/Office site in booming Hays County. 300+ ft frontage on FM 967 with 23,000VPD (TxDOT 2019). Arveda Ln is a private road, access agreement in place. Ideal location for retail, office, mixed-use residential. 3,300 homes are planned within a two mile radius of the property.



J.D. Sanford

512-924-1459

JDsanfordreal@gmail.com

www.johnbsanford.com

John B. Sanford

512-922-5633

Johnbsanford@gmail.com

The information contained herein is from sources deemed reliable, however John B. Sanford, his employees and his agents have not made an independent confirmation of the information and no warranty or guarantee of accuracy is made. A prospective tenant or buyer should confirm any important information with the assistance of an engineer and/or attorney during a feasibility period prior to closing the sale or leasing the property.



John B. Sanford Real Estate

6.822 Acres—FM 967 and Arveda Ln

645 FM 967 #200, Buda, TX 78610



### Legend

#### Wastewater Manhole



#### Wastewater Line

Force

Gravity

#### Water Line

<Null>

2

4

6

8

12

J.D. Sanford

512-924-1459

JDsanfordreal@gmail.com

www.johnbsanford.com

John B. Sanford

512-922-5633

Johnbsanford@gmail.com

The information contained herein is from sources deemed reliable, however John B. Sanford, his employees and his agents have not made an independent confirmation of the information and no warranty or guarantee of accuracy is made. A prospective tenant or buyer should confirm any important information with the assistance of an engineer and/or attorney during a feasibility period prior to closing the sale or leasing the property.



John B. Sanford Real Estate

6.822 Acres—FM 967 and Arveda Ln

645 FM 967 #200, Buda, TX 78610



Proposed Residential Developments  
Persimmon - 2,500 Homes  
Reserve and Colony at Cole Springs - 801 Homes

J.D. Sanford  
512-924-1459  
JDsanfordreal@gmail.com  
www.johnbsanford.com

John B. Sanford  
512-922-5633  
Johnbsanford@gmail.com

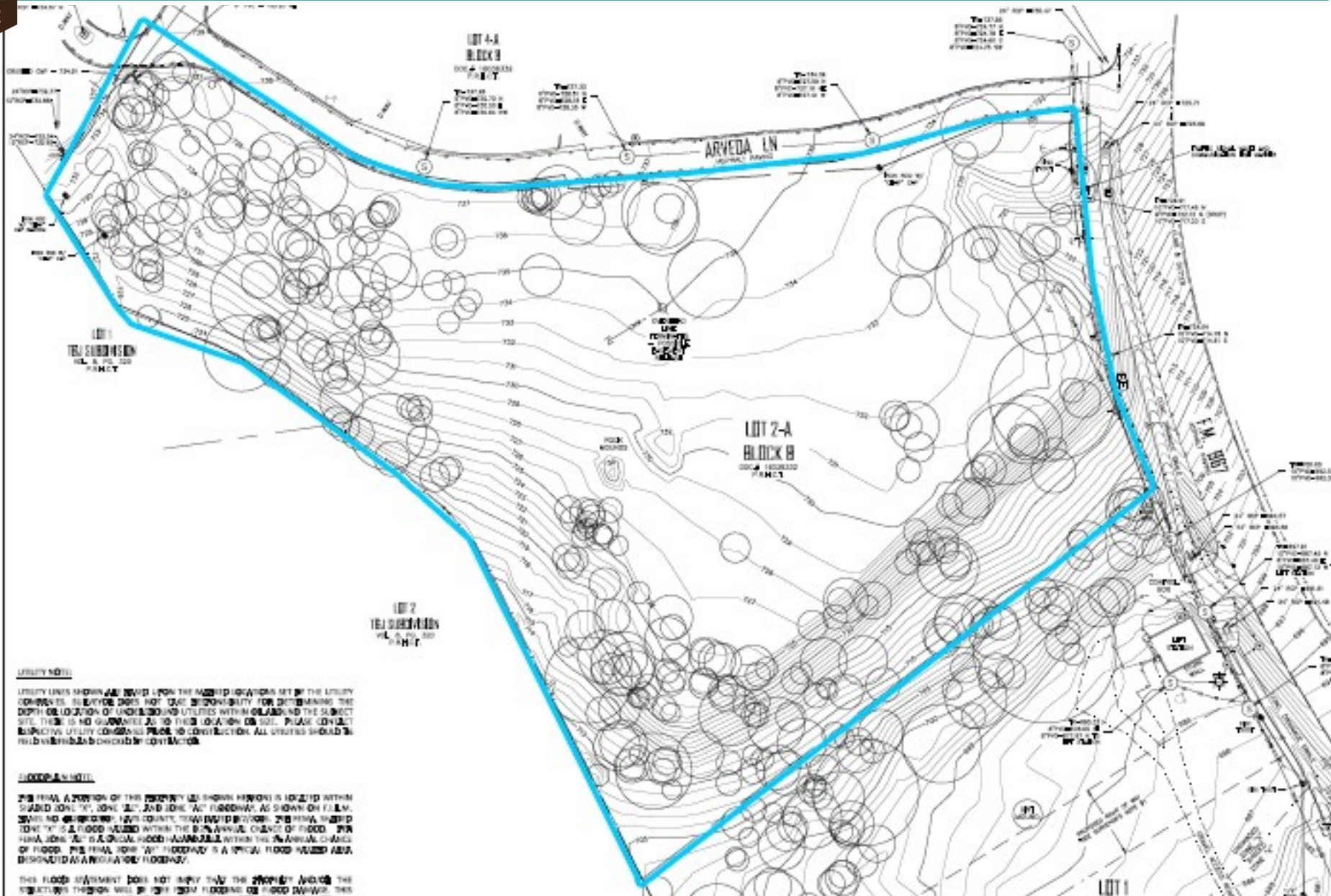
The information contained herein is from sources deemed reliable, however John B. Sanford, his employees and his agents have not made an independent confirmation of the information and no warranty or guarantee of accuracy is made. A prospective tenant or buyer should confirm any important information with the assistance of an engineer and/or attorney during a feasibility period prior to closing the sale or leasing the property.



John B. Sanford Real Estate

6.822 Acres—FM 967 and Arveda Ln

645 FM 967 #200, Buda, TX 78610



J.D. Sanford  
512-924-1459  
JDsanfordreal@gmail.com  
www.johnbsanford.com

John B. Sanford  
512-922-5633  
Johnbsanford@gmail.com

The information contained herein is from sources deemed reliable, however John B. Sanford, his employees and his agents have not made an independent confirmation of the information and no warranty or guarantee of accuracy is made. A prospective tenant or buyer should confirm any important information with the assistance of an engineer and/or attorney during a feasibility period prior to closing the sale or leasing the property.