



John B. Sanford Real Estate

6.8 Acres—Dacy Ln at Kyle Parkway

1400 Dacy Ln, Kyle, TX 78640

Price: \$8/sq ft

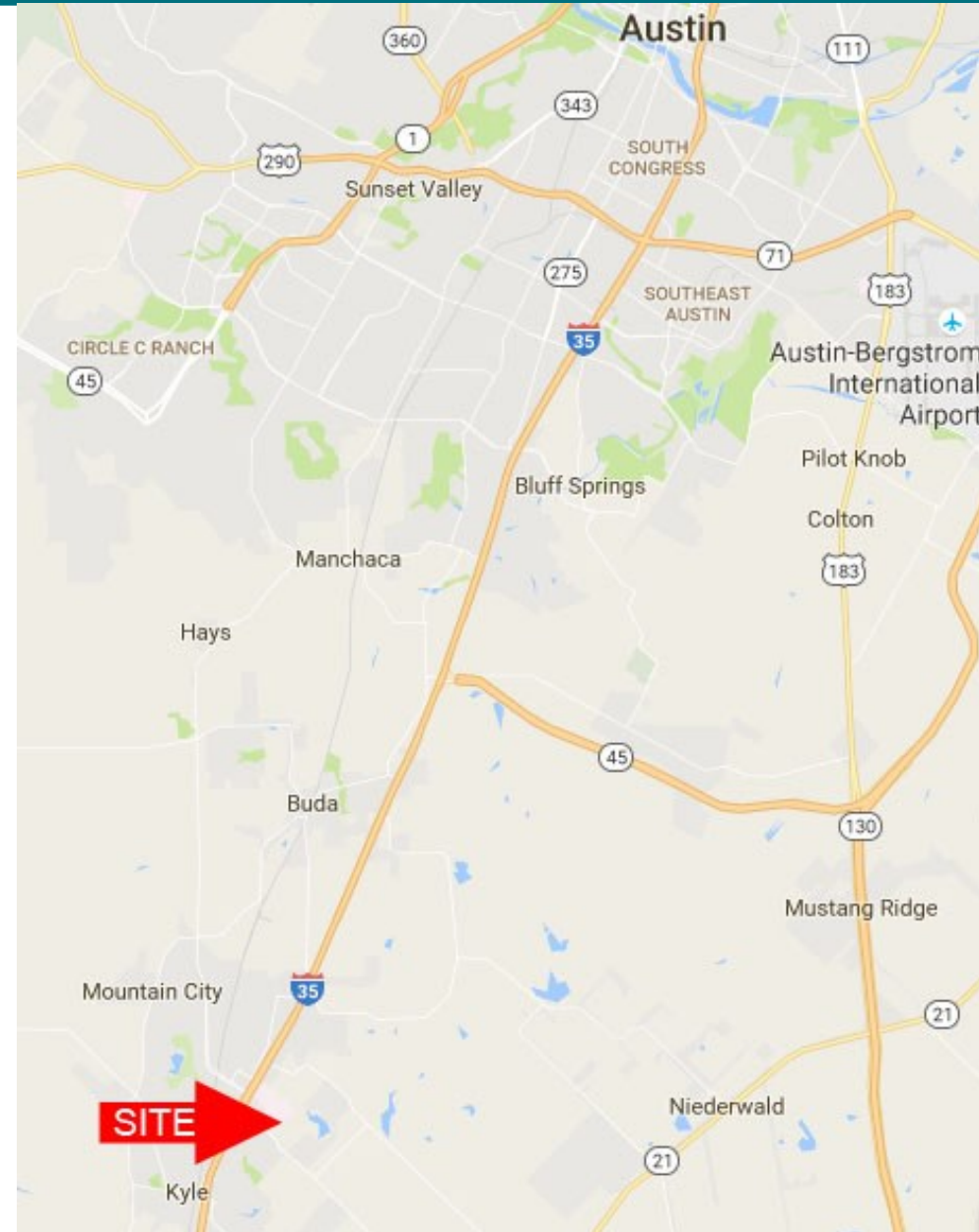
Size: 6.8 Acres

Location: 1400 Dacy Ln, near Seton-Kyle Hospital

Utilities: Water: City of Kyle on Site
 Sewer: City of Kyle at Street
 Electricity: PEC on Site

Jurisdiction: City of Kyle

Notes: Located along the path of the future extension of Kyle Pkwy. South side of property to be dedicated for ROW of future Kyle Pkwy. Rapidly developing area perfectly located for retail, office, medical, or mixed use development. Adjacent sites also available.



J.D. Sanford
 512-924-1459
 JDsanfordreal@gmail.com
 www.johnbsanford.com

John B. Sanford
 512-922-5633
 Johnbsanford@gmail.com

The information contained herein is from sources deemed reliable, however John B. Sanford, his employees and his agents have not made an independent confirmation of the information and no warranty or guarantee of accuracy is made. A prospective tenant or buyer should confirm any important information with the assistance of an engineer and/or attorney during a feasibility period prior to closing the sale or leasing the property.



John B. Sanford Real Estate

6.8 Acres—Dacy Ln at Kyle Parkway

1400 Dacy Ln, Kyle, TX 78640



J.D. Sanford

512-924-1459

JDsanfordreal@gmail.com

www.johnbsanford.com

John B. Sanford

512-922-5633

Johnbsanford@gmail.com

The information contained herein is from sources deemed reliable, however John B. Sanford, his employees and his agents have not made an independent confirmation of the information and no warranty or guarantee of accuracy is made. A prospective tenant or buyer should confirm any important information with the assistance of an engineer and/or attorney during a feasibility period prior to closing the sale or leasing the property.

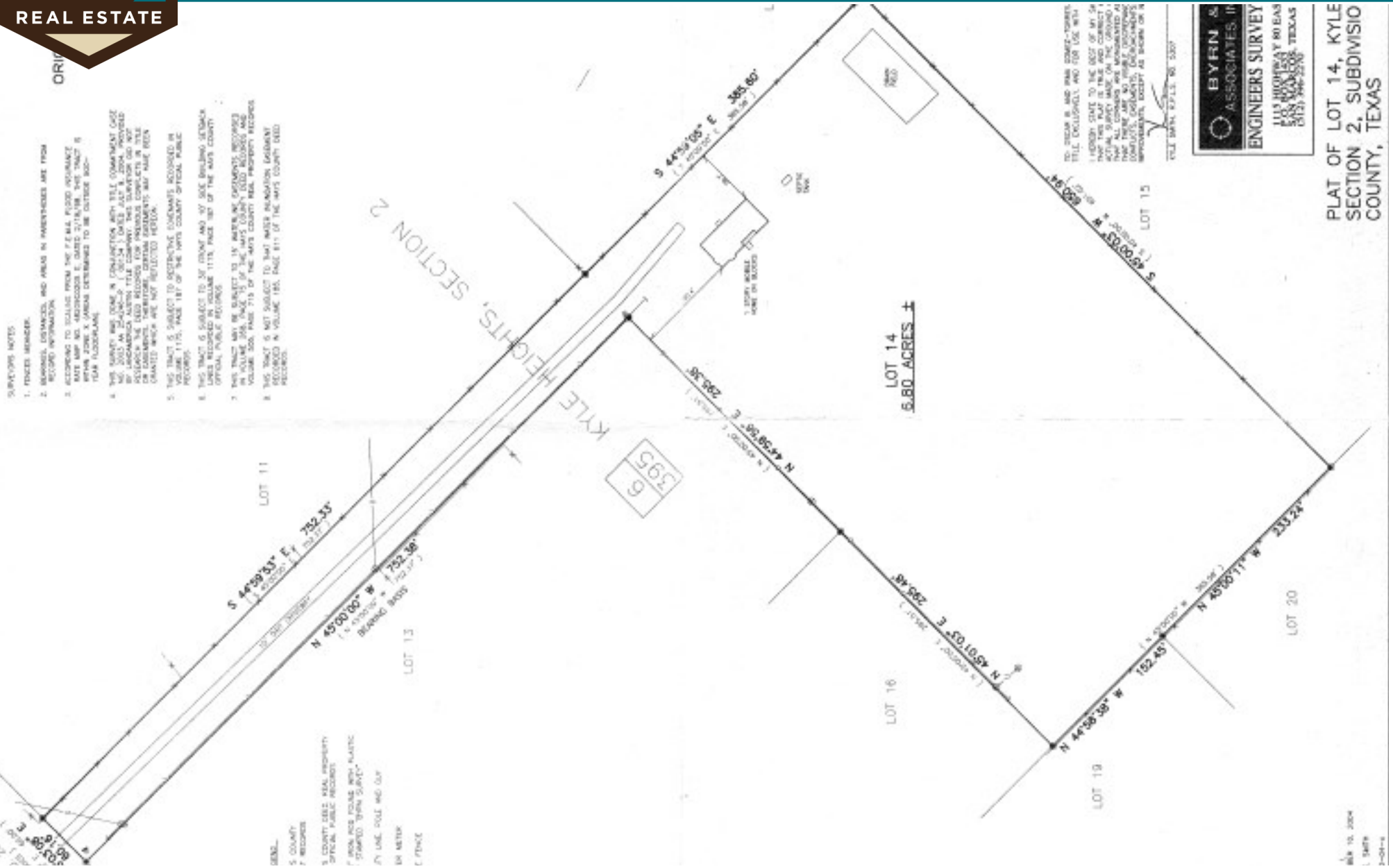


John B. Sanford Real Estate

6.8 Acres—Dacy Ln at Kyle Parkway

1400 Dacy Ln, Kyle, TX 78640

REAL ESTATE



J.D. Sanford
512-924-1459
JDsanfordreal@gmail.com
www.johnbsanford.com

John B. Sanford
512-922-5633
Johnbsanford@gmail.com

The information contained herein is from sources deemed reliable, however John B. Sanford, his employees and his agents have not made an independent confirmation of the information and no warranty or guarantee of accuracy is made. A prospective tenant or buyer should confirm any important information with the assistance of an engineer and/or attorney during a feasibility period prior to closing the sale or leasing the property.



John B. Sanford Real Estate

6.8 Acres—Dacy Ln at Kyle Parkway

1400 Dacy Ln, Kyle, TX 78640



Adjacent Property Also Available

J.D. Sanford
512-924-1459
JDsanfordreal@gmail.com
www.johnbsanford.com

John B. Sanford
512-922-5633
Johnbsanford@gmail.com

The information contained herein is from sources deemed reliable, however John B. Sanford, his employees and his agents have not made an independent confirmation of the information and no warranty or guarantee of accuracy is made. A prospective tenant or buyer should confirm any important information with the assistance of an engineer and/or attorney during a feasibility period prior to closing the sale or leasing the property.