

Price: \$899,000 \$3.60/sqft

Size: 5.74 Acres

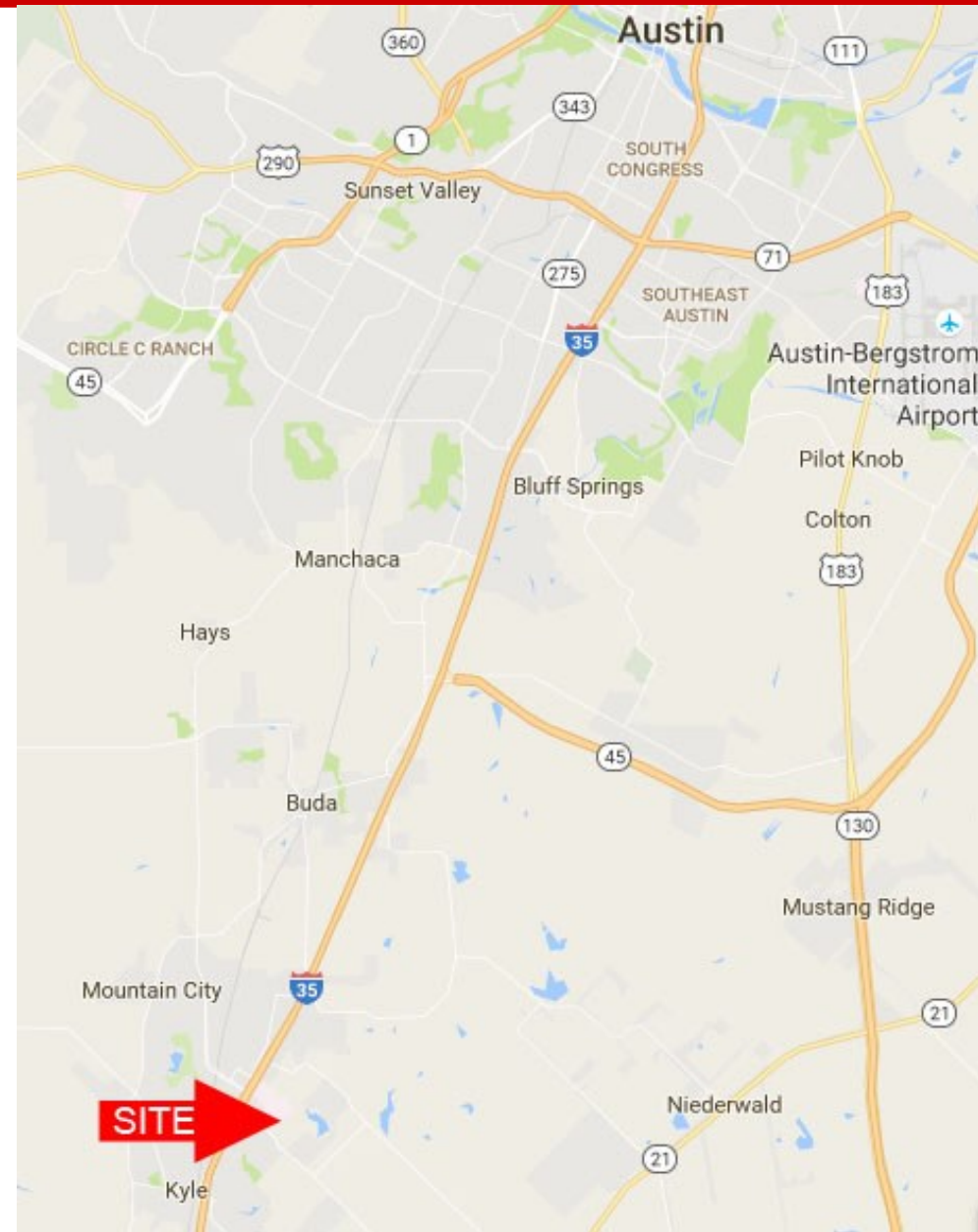
Location: 1600 Dacy Ln, near Seton-Kyle Hospital

Access: Directly from Dacy Ln

Topo: Sloping—great views to the West

Utilities: Electricity PEC
Water City of Kyle
Sewer City of Kyle nearby

Note: This area immediately East of the Seton-Kyle Medical Complex is rapidly developing as auxiliary medical and office. More office and apartments are still needed in this rapidly growing area. City has plans to extend Kyle Parkway further to the East opening up more of this prime area for development.



John B. Sanford

512-922-5633

Johnbsanford@gmail.com

www.johnbsanford.com

J.D. Sanford

512-924-1459

JDsanfordreal@gmail.com

The information contained herein is from sources deemed reliable, however John B. Sanford, his employees and his agents have not made an independent confirmation of the information and no warranty or guarantee of accuracy is made. A prospective tenant or buyer should confirm any important information with the assistance of an engineer and/or attorney during a feasibility period prior to closing the sale or leasing the property.

John B. Sanford Real Estate

5.74 Acres—Dacy Ln at Kyle Parkway

1600 Dacy Ln, Kyle, TX 78640



JOHN B SANFORD REAL ESTATE
512 - 312 - 1301

1600 DACY LN, KYLE TX 78640
5.74 Ac

John B. Sanford

512-922-5633

Johnbsanford@gmail.com

www.johnbsanford.com

J.D. Sanford

512-924-1459

JDsanfordreal@gmail.com

The information contained herein is from sources deemed reliable, however John B. Sanford, his employees and his agents have not made an independent confirmation of the information and no warranty or guarantee of accuracy is made. A prospective tenant or buyer should confirm any important information with the assistance of an engineer and/or attorney during a feasibility period prior to closing the sale or leasing the property.

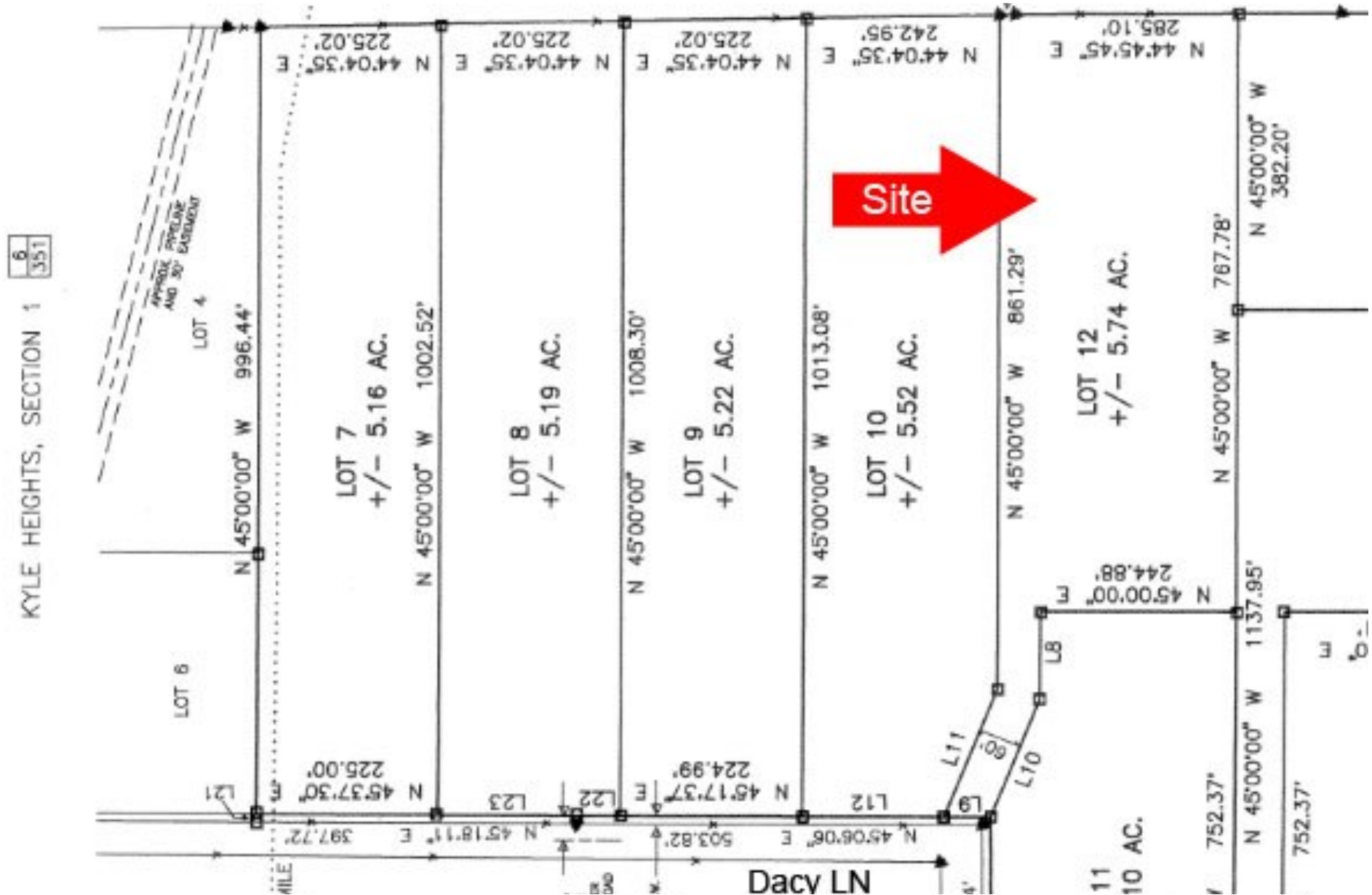


JOHN B SANFORD
REALTOR
512 - 312 -1301
1600 DACY LN
5.74 AC

John B. Sanford
512-922-5633
Johnbsanford@gmail.com
www.johnbsanford.com

J.D. Sanford
512-924-1459
JDsanfordreal@gmail.com

The information contained herein is from sources deemed reliable, however John B. Sanford, his employees and his agents have not made an independent confirmation of the information and no warranty or guarantee of accuracy is made. A prospective tenant or buyer should confirm any important information with the assistance of an engineer and/or attorney during a feasibility period prior to closing the sale or leasing the property.



John B. Sanford

512-922-5633

Johnbsanford@gmail.com

www.johnbsanford.com

J.D. Sanford

512-924-1459

JDsanfordreal@gmail.com

The information contained herein is from sources deemed reliable, however John B. Sanford, his employees and his agents have not made an independent confirmation of the information and no warranty or guarantee of accuracy is made. A prospective tenant or buyer should confirm any important information with the assistance of an engineer and/or attorney during a feasibility period prior to closing the sale or leasing the property.